



# **CITY GUIDE TO MANCHESTER**



## Healthcare

### NHS

Find a GP and a dentist to register with at [www.nhs.uk](http://www.nhs.uk)

### Walk-in Centres

- Closest A+E, Manchester Royal Infirmary, Upper Brook Street, Manchester, M13 9NZ
- City Health Centre (Boots), uœ ©Ú·=K·5~Å5Ö· K~¥5à œ5r~ œ5 OS~K~œù~îîïî~ÖÑx~ÔĐĐÖ~K~œ55œ Ö·œ~œ22 à K·K~k·5~KÚ· 2Ú·K~kà°·~© =SùKœKà ~5~K~œ55œ Ò·œ~à n2·5= ~© =SùKœKà P
- Primary Care Emergency Health Centre, (Near Royal Infirmary) Manchester Royal Infirmary, Oxford Road, Manchester, Greater Manchester, M13 9WL

### Additional helpful information

- 999: emergency help (ambulance, police & fire brigade)
- 111: non-emergency medical support
- 101: non-emergency police support
- 112: emergency number for mobiles anywhere in the world

### What3Words

Download the app to give your exact location to emergency services

### Citizens Advice Bureau (CAB)

Citizens Advice provides free, independent, confidential, and impartial advice to everyone on their rights and responsibilities. [www.citizensadvice.org.uk](http://www.citizensadvice.org.uk)

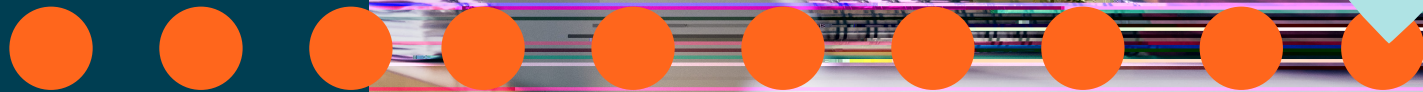
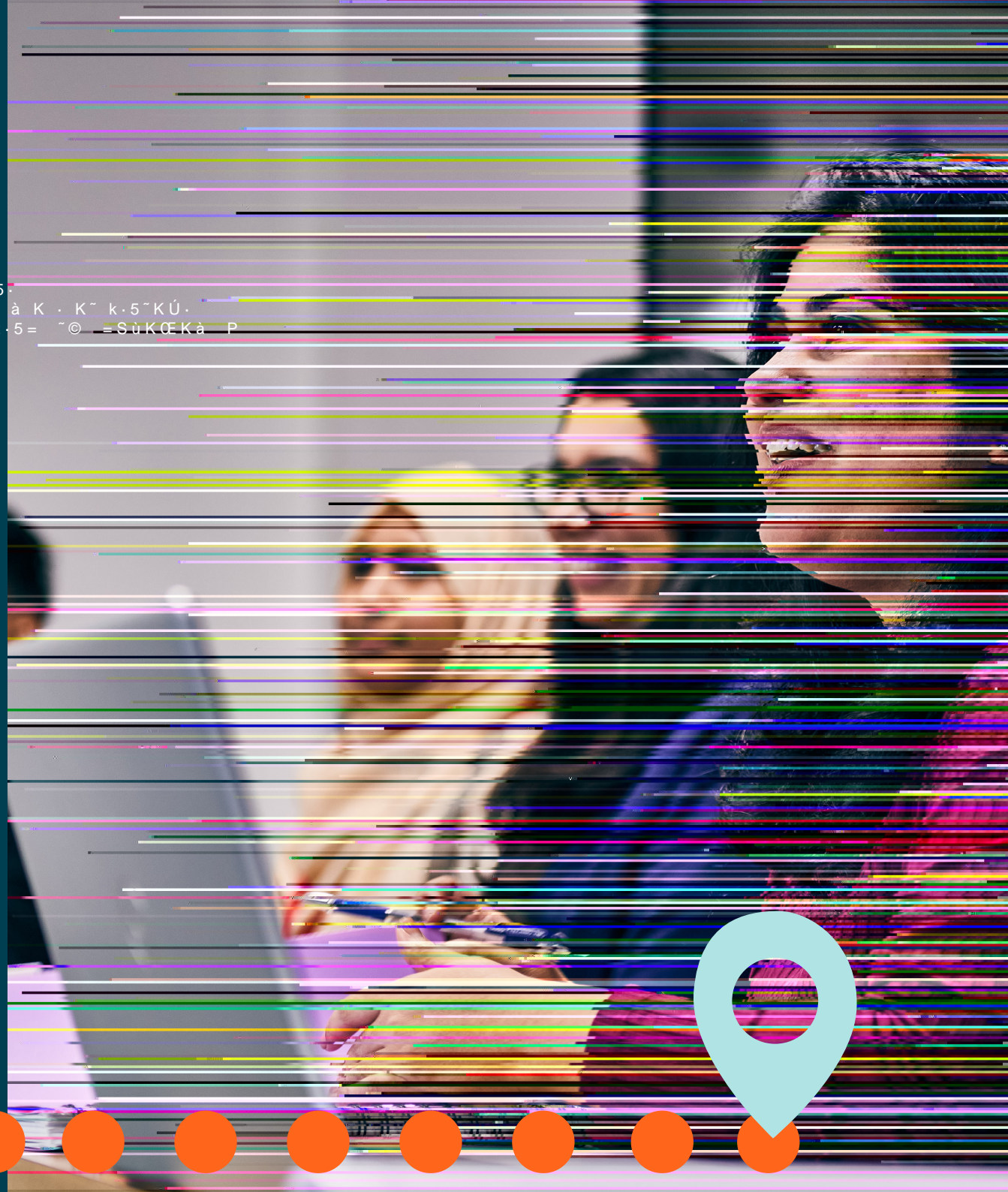
### Gyms

#### JD Sports

This gym is around the corner from the campus, has over 300 classes a month and even saunas in the changing rooms. Bridgewater House, Whitworth Street, Manchester, M1 6LT [www.jdgyms.co.uk](http://www.jdgyms.co.uk)

#### Better Sugden Sports Centre

You'll find a gym, fitness classes, pitches, courts, and a sports hall less than a ten-minute walk from campus. Student discount is available on memberships. 114 Grosvenor Street, Manchester, M1 7HL [www.better.org.uk](http://www.better.org.uk)



## Entertainment

### Palace Theatre

The Palace Theatre opened in 1891 and was originally known as “the Grand Old Lady of Oxford Street”. Located next to campus you can be entertained by regular theatre shows. 97 Oxford Street, Manchester, M1 6FT [www.manchestheatres.com](http://www.manchestheatres.com)

### Printworks

Based near the Arndale shopping centre opposite Exchange Square, there are many different things to do at the Printworks such as a trip to the cinema, crazy golf, bowling and a variety of food and drink options. Make sure to check out the student offers on the website before you go. 27 Withy Grove, Manchester, M4 2BS [www.printworks-manchester.com](http://www.printworks-manchester.com)

### Arndale Centre

This is biggest shopping centre in central Manchester where you will find plenty of food and drinks venues and entertainment options. Manchester Arndale, Manchester, M4 1AZ [www.manchesterarndale.com](http://www.manchesterarndale.com)

### Trafford Centre

Shop, eat and play at the Trafford Centre. You'll also find many other activities and events here. The Trafford Centre, Trafford Park, Stretford, Manchester, M17 8AA [www.traffordcentre.co.uk](http://www.traffordcentre.co.uk)

### Manchester Art Gallery

Home to a collection of over 46,000 objects of fine art, decorative art and costume, this art gallery is located close to the campus. Enjoy free entry to the range of exhibitions. Manchester Art Gallery, Mosley Street, Manchester, M2 3JL [www.manchesterartgallery.org](http://www.manchesterartgallery.org)

### Science and Industry Museum

The Science and Industry Museum traces the development of science, technology, and industry with emphasis on the city's achievements in these fields. Entry to the museum is free. Liverpool Road, Manchester, M3 4FP [www.scienceandindustrymuseum.org.uk](http://www.scienceandindustrymuseum.org.uk)

### Football Museum

The National Football Museum is based in the Urbis building in Manchester city centre, and preserves, conserves and displays important collections of football memorabilia. Building Cathedral Gardens, Trafford Park, Manchester, M17 1EX [www.nationalfootballmuseum.com](http://www.nationalfootballmuseum.com)

